

Nisqually Aquatic Reserve Education



Over 25 years
Of Education
and Research

Daniel Hull

NRNC

4949 D'Milluhr Dr NE

Olympia, WA 98516

Executive Director

Contact:

nrnc@nisquallyestuary.org

www.nisquallyestuary.org





OUTREACH TO THE COMMUNITY FESTIVALS

COMMUNITY PRESENTATIONS AT NRNC



OUTREACH TO COMMUNITY GROUPS



OUTREACH TO SCHOOLS



SUMMER CAMP NRNC



ON THE BEACH DISCOVERY NRNC





Over 25 years
Of Education
and Research

Anderson Island Education at Andy's Marine Park 5-7-12





Over 25 years
Of Education
and Research

SCHOOLS AT NRNC

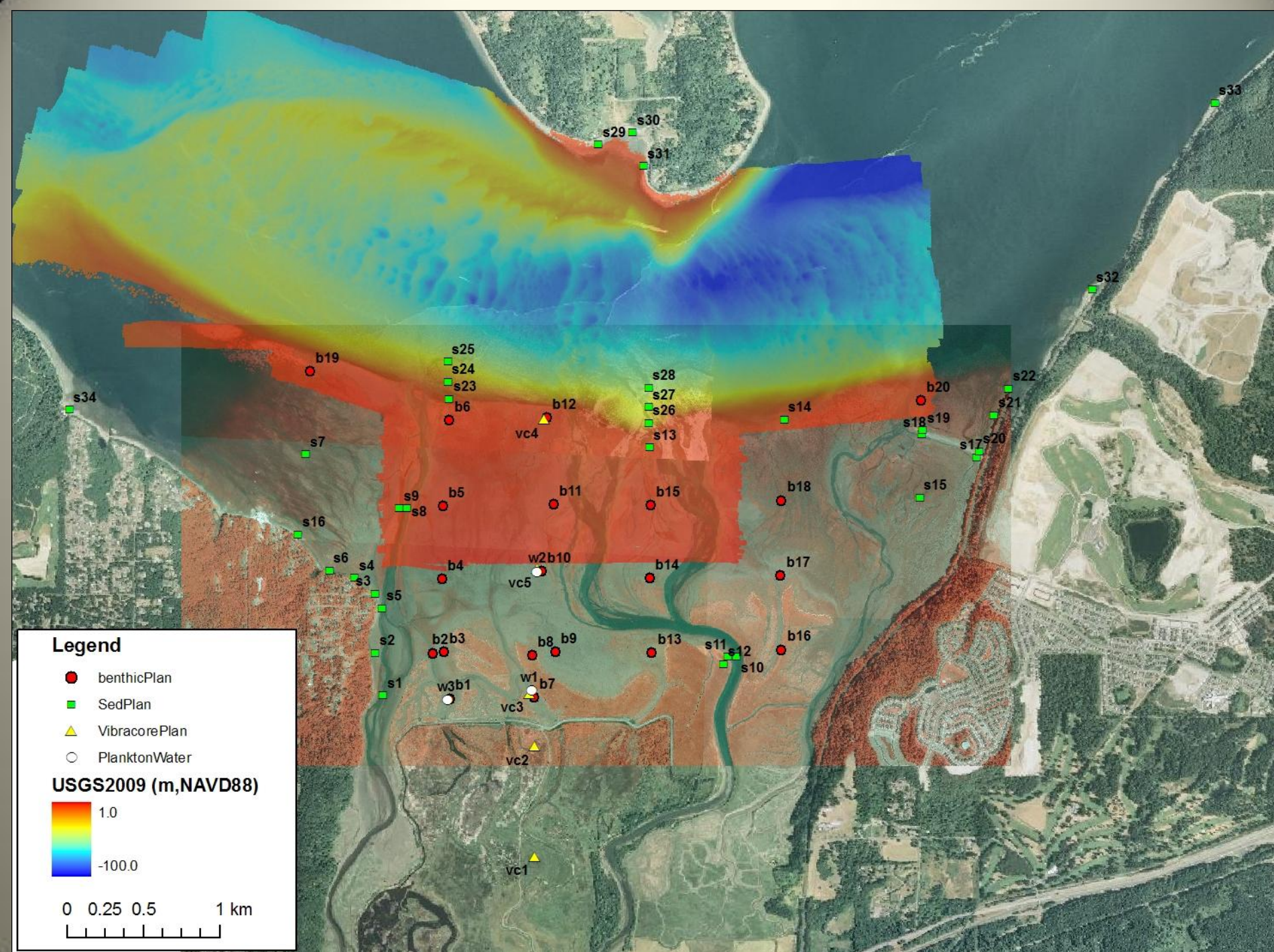




HANDS ON TRAINING COLLEGE

Nature Mapping at NNWR and Beyond





Education the key to a healthy future

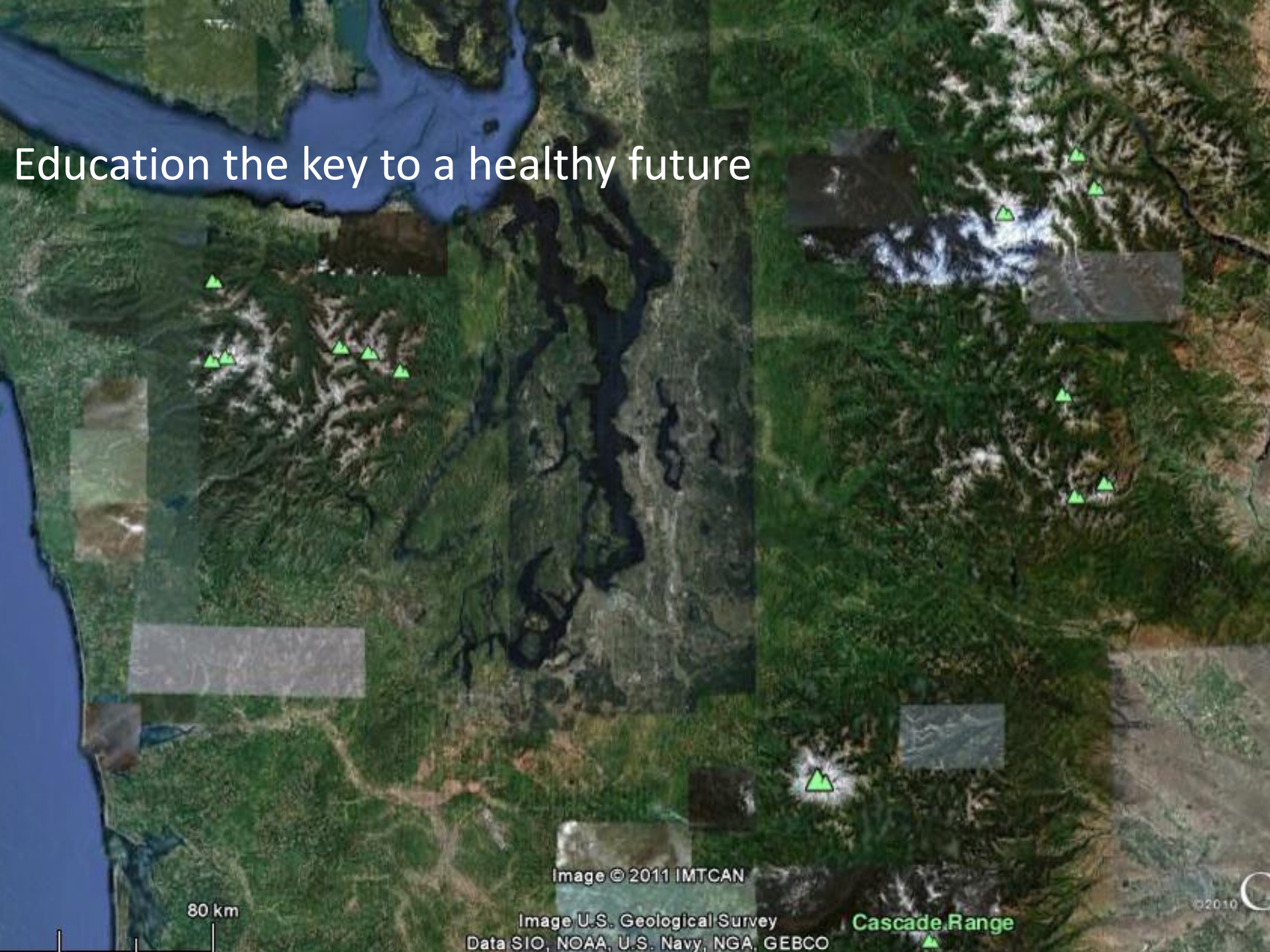


Image © 2011 IMTCAN

Image U.S. Geological Survey
Data SIO, NOAA, U.S. Navy, NGA, GEBCO

Cascade Range

80 km

©2010